

IS502052: Enterprise Systems Development Concepts

Lab 9: Entity Relationship

I. Introduction

In this lab tutorial, we will continue the previous labs, but we will solve the problem when having more than one tables and the relationship between them. There are **3** popular relationships:

- *Many-to-many* relationship;
- *One-to-many* relationship;
- *One-to-one* relationship.

II. One-to-many Relationship

A *Customer* has a *one-to-many* relationship with a *Purchase Order* because a customer can place many orders, but a given purchase order can be placed by only one customer.

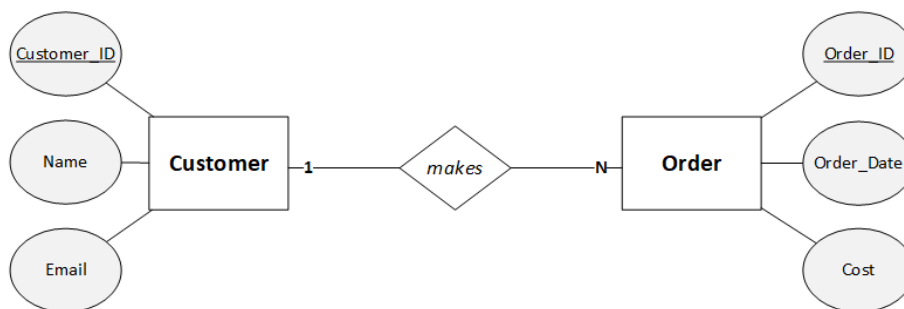


Figure 1 ERD

Requirement: Implement the EJB application to manage this store.

III. One-to-one relationship

A *Person* can have only one *Passport* and that *Passport* can belong to only one *Person*.

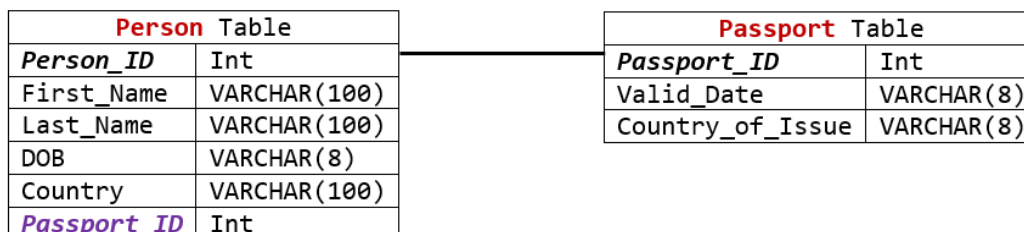


Figure 2 Database table

Requirement: Implement the EJB application to manage this passport portal.